



Morpho-sensory evaluation of orange fleshed sweet potato (*Ipomoea batatas* L.) Varieties in the low lands of North Shewa zone

Zerihun Kebede¹⁺
Getaneh Geto²
Fiseha Desalegn³
Demis Managido⁴

^{1,2,3,4} Amhara Agricultural Research Institute, Debre Birhan
Agricultural Research Center, Ethiopia.

¹Email: zublinotho@gmail.com

²Email: getanehgeto@gmail.com

³Email: fisehadesalegn88@gmail.com

⁴Email: demisem21@gmail.com



(+ Corresponding author)

ABSTRACT

Article History

Received: 28 October 2022

Revised: 20 January 2023

Accepted: 23 August 2023

Published: 29 December 2023

Keywords

Hedonic test

Orange fleshed

Participatory approach

Sensory evaluation

Yield.

Though Sweet potato (*Ipomoea batatas* L.) is one of the internationally as well as nationally important root crops its production is challenged with various bottlenecks. Lack of planting materials, shortage of farmer preferred varieties, poor extension system among many other constraints. This study was conducted to assess the performance and test of different orange fleshed sweet potato varieties in participatory approach in the lowlands of North shewa. Evaluation of eight varieties was carried out in main cropping season using a Randomized Complete Block Design with three replications. Number of roots per plant, root weight per plant, root length, root diameter, marketable and total root yield were measured and analyzed using the generalized linear model procedure with SAS statistical software version 9.1. Moreover, farmers' perception assessment and sensory analysis which had an important constituency in the selection process were done using pairwise matrix and hedonic scale, respectively. Except root length, all the traits showed significant difference between varieties. Variety Kulfo gave the highest root yield (38.8 tha⁻¹) and root diameter (98.8 mm); whereas the lowest root yield (22.1 tha⁻¹) and root diameter (64.5 mm) were recorded from varieties Teo jet and Delvia, respectively. Farmers were also selecting varieties Lords, Cicilia and Birtukane. Panelists selected Bela, Birtukane and Kulfo as the best varieties. Hence, varieties Kulfo, Lords and Birtukane were recommended for further popularization to boost the production and productivity of the crop for production the lowlands of north shewa and other similar agro-ecologies.

Contribution/Originality: This study contributes in the existing literature that adaptive performance of sweet potato varieties differ significantly across environments and also indicated the need to consider to sensory attributes like taste in selecting sweet potato variety for production. The study assessed eight varieties by scientifically comparing them with very important traits with the proper participation of producer and consumer groups and come up with valid conclusion.

1. INTRODUCTION

Sweet potato (*Ipomoea batatas* L.) is a dicotyledonous plant that belongs to family Convolvulaceae and order Polemoniales. It is an autopolyploid (2n=6x=90) crop with a basic chromosome number of 15. Its' large starchy, and sweet tasting roots are an important edible part. It produces storage roots which are rich in carbohydrate, vitamins such as A, B complex, C, E and minerals such as potassium, calcium and iron [1]. The young leaves and

shoots are sometimes eaten as green. Even though eating its leaf part at green stage is not accustomed in our country, it has high starch and protein content.

After potatoes and cassava, it is the world's third-largest root and tuber crop [2]. It can be grown in tropical, subtropical, and frost-free temperate climatic conditions. In Ethiopia, it is mostly cultivated in the southern, southwestern, and eastern parts of the country and recognized as the third most important root crop next to ensete and potato [3]. Due to the low level of agricultural input requirement, high productivity per unit area, good nutritional value, and increasing food demand owing to the high population growth of the country, sweet potato is one of the ideal food security crops. The area covered and the quantity of sweet potato production is increasing from time to time [3] and in the 2020/21 cropping season, the total area under sweet potato in the country is 62116.56 ha. The average productivity of sweet potatoes is 25.74 tha⁻¹ [4] which is by far lower than the potential yield which is reported to be in the range of 40–50 tha⁻¹. Furthermore, most sweet potato varieties grown today are poorly adapted, have low root yields, are less nutritious, and have white flesh that lacks beta-carotene, a precursor to vitamin A.

In plants, carotenoids including beta carotenes also act as a strong antioxidant, which prevents damage from various environmental stresses, including strong light, high temperature, Ultra violet lights, and drought [5]. Moreover, the available improved Orange flesh Sweet potato varieties were not evaluated for their adaptability and performance in North Shewa. Hence, evaluation of improved orange fleshed sweet potato varieties is sensible. Therefore, the objective of this study was to identify adaptable, high yielding and farm/consumer preferred orange fleshed sweet potato varieties.

2. MATERIAL AND METHODS

2.1. Description of the Study Area

The study was conducted under rain fed condition for two years (2019-2020) in the main cropping season at Kewet and Efratana gidim Woredas of North Shewa, Amhara National Regional State, Ethiopia. Soil of the testing areas represents a heavy clay-textured Nitosol. A detail of climatological and geographic descriptions of the study area are indicated below in Table 1 and Figure 1. Moreover, these areas are characterized by bimodal rainfall systems which mostly had an erratic or irregular distribution. Cereals like long maturing sorghum varieties and tef are the predominantly grown crops whereas cattle and shoats are the major livestock with natural pasture (grazing) and crop residues are the popular feed sources.

Table 1. Geographic and climatological descriptions of the study area.

Locations	Distance from A.A (km)	Altitude (m.a.s.l.)	Longitude	Latitude	Mean annual RF (mm)	Mean temp.(°c)	
						Max	Min
Efratana gidim	270	1487	39° 54' 27" East	10° 17' 27" North	1018	27.7	11.5
Shewa robit	220	1298	39° 53.47' East	9° 59.7' North	750	34.20	9.62

2.2. Experimental Materials and Field Performance Evaluation

Performance of eight released (*i.e.* *Kulfo*, *Belela*, *Birtukane*), and introduced (*i.e.* *Delvia*, *Jane*, *Tio joe*, *Cecilia* and *Lourdes*) varieties were evaluated for two seasons (2019 and 2020) in randomized complete block design (RCBD) with three replications under rain fed condition at Shewarobit and Ataye. The introduction was made from Mozambique through the national sweet potato improvement program at Hawassa Agricultural Research Center. Multiplication of planting materials was made at Ataye yemlowha kebele farmers training center (FTC). The experimental plots were prepared by a traditional oxen drawn plough. Undamaged, reasonably uniform stem cuttings with 2-4 buds and 15-30 cm were used as a planting material and were planted at the early onset of rainfall on July 27-28 in 2019 and July 27-28 in 2020 on well prepared plots in the ridge of 100 cm width with a 30 cm

among plant. Each plot consisted four rows of 3m long with a plot size of 3m*4m. Full dose of the NPS (100 kg/ha) fertilizer was applied at planting and the nitrogen fertilizer was applied in the form of Urea (100 kg/ha) was used (half at early stage of establishment and the rest after 45 days). All other agronomic operations (*i.e. 2 times hand weeding and earthing up: at 20 and 45 days from planting*) were performed uniformly. No pesticide was applied since there was no outbreak of insects or diseases and harvesting was done at full maturity manually using hoe.

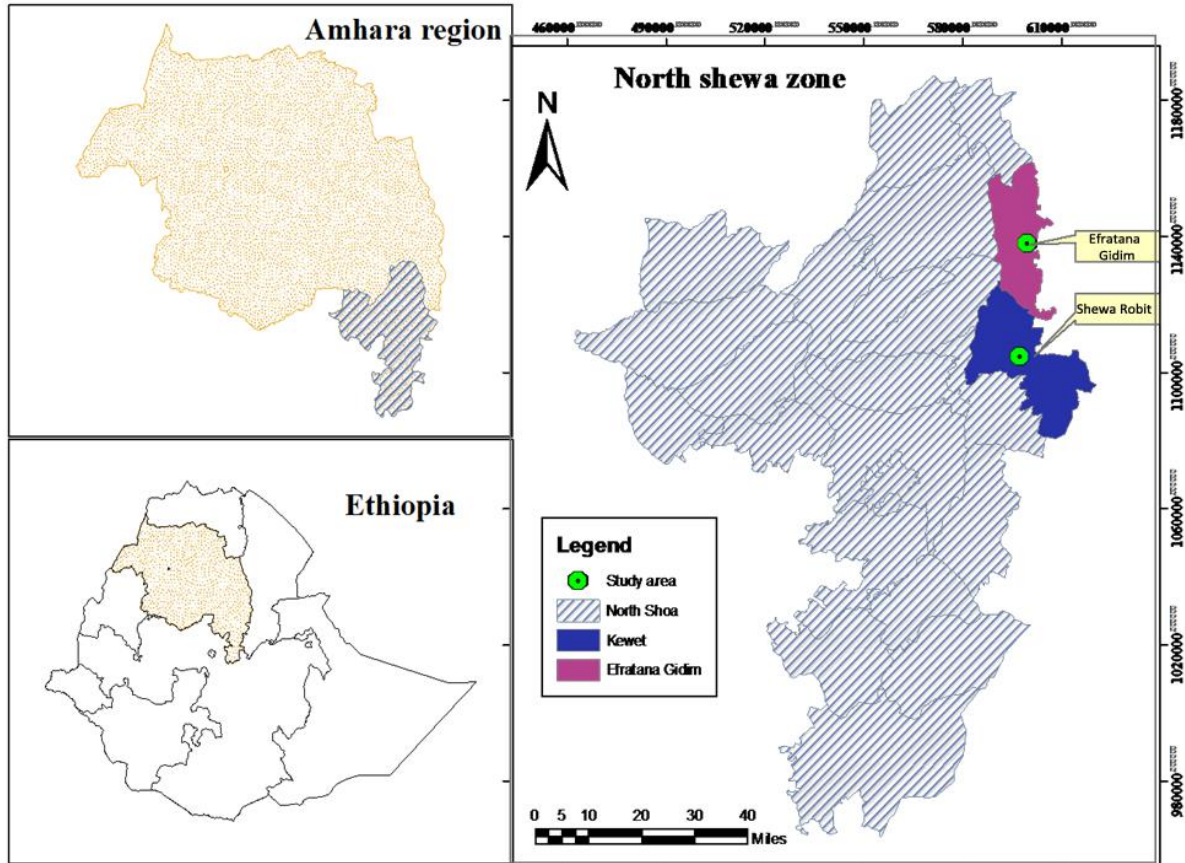


Figure 1. Map of the study area.

Data were collected on yield and related attributes and combined analysis of variance (ANOVA) for yield and yield component characters of the varieties tested across locations was performed using the SAS statistical package V-9.1 and the analysis was done at 5 % significance level. The mean differences among treatments were calculated by using Duncan multiple range test (DMRT).

2.3. Farmers' Field Day and Evaluation of the Varieties

In 2020, Field-day was organized by inviting experts from woreda level office of agriculture and farmers from Shewa robot so as to facilitate future promotion works and acquire farmers' perception (*i.e., their selection criteria and varietal preferences*). A total of 21 farmers and 10 (1 F) experts were participated during field evaluation. General awareness about the experiment was given for the selected farmers. Then, farmers were given the chance to discuss and share ideas on issues like their preferences, criteria for evaluation and characteristics of good sweet potato varieties.

All farmers were participated in both mass and individual selection of sweet potato varieties. Farmers were first identifying and list of attributes which was very important for them to select adapted varieties and gave weight for attributes according to their importance. The major selection attributes identified by farmers were yield, root size,

above ground biomass, disease tolerance and number of roots. Finally, the varieties were evaluated by the farmers using these criteria and analyzed using pair wise and matrix ranking.

2.4. Sensory Evaluation: Samples Preparations and Evaluation

- *Sorting*: disease free undamaged and more or less uniformly medium sized roots were selected and thoroughly washed with tap water.
- *Boiling*: the roots were immersed in tap water and boiled in a pressure cooker until the texture, as assessed by a knife, was considered tender and suitable for eating.
- *Sample preparation*: samples were sliced into roughly equal sized pieces using a knife and coded with arbitrary numbers before served to selected panelists on plates as ready-to-eat food.
- *Selecting panelists*: 11 (7 M and 4 F) untrained panelists, who declared themselves as regular consumers of sweet potato were selected for sensory evaluation.

Serving and sensory assessment: After each test, the panelists were asked to assess their appreciation of the color, taste, flavor, texture, mouth feel and overall acceptability using the 7-point hedonic scale (i.e., from 1 (“dislike a lot”) through 4 (“neither like nor dislike”) to 7 (“like a lot”) according to Tomlins, et al. [6].

- Remark: Panelists were provided with water to rinse their mouth before and after evaluating each sample to eliminate bias between evaluations.

3. RESULTS AND DISCUSSIONS

3.1. Agronomic Performance of the Varieties

A statistically Significant ($p \leq 0.05$) difference was observed between genotypes in all agro-morphological traits (i.e. average root weight, average root number per plant, average root diameter, marketable root yield, and total root yield) except average root length. Tesfaye, et al. [7] also reported significant variation between sweet potato genotypes in yield and other desirable traits in their adaptation trial in different agro ecologies of Ethiopia. The detail genotypic variations of these traits were discussed in Table 2.

Table 2. ANOVA of mean square values of agro morphological traits of orange fleshed sweet potato varieties at Ataye and Shewarobit, 2019-20.

Source	DF	Mean square values of morphological traits of OFSP varieties					
		MRY (tha^{-1})	TRY (tha^{-1})	ARD (mm)	ARL (mm)	ARW (g)	ARNPP
Loc	1	1063.1**	798.4**	23.7 ^{NS}	7330.1**	7885.1 ^{NS}	43.7*
Rep(Loc)	4	95.94 ^{NS}	109.0 ^{NS}	450.6 ^{NS}	2277.4 ^{NS}	9271.5 ^{NS}	1.3 ^{NS}
Year	1	187.80 ^{NS}	87.1 ^{NS}	506.6 ^{NS}	812849.5**	388998.3**	608.0**
Year*Loc	1	43.30 ^{NS}	1.0 ^{NS}	10983.8**	5827.2*	86438.4**	319.0**
Year*Rep(loc)	4	78.75 ^{NS}	61.9 ^{NS}	370.9 ^{NS}	2224.1 ^{NS}	10091.5 ^{NS}	4.4 ^{NS}
Treat	7	250.78*	275.0*	1399.3**	1437.1 ^{NS}	25792.0**	52.3**
Loc*Treat	7	234.97*	232.0*	637.3 ^{NS}	729.3 ^{NS}	12492.4*	3.4 ^{NS}
Year*Treat	7	239.09*	269.1*	969.4*	1328.5 ^{NS}	9106.5 ^{NS}	11.6 ^{NS}
Year*Loc*Treat	7	183.51 ^{NS}	213.8*	364.6 ^{NS}	859.9 ^{NS}	13501.7*	28.2**

Note: TRY: Total root yield, MRY: Marketable root yield, ARW: Average root weight, ARNPP: Average root number per plant, ARD: Average root diameter, and ARL: Average root length. NS: Non-significant variation, * and ** represent significance at 5% and 1% probability levels, respectively.

Though there is no statistically significant difference in root length ranged from 95.2 mm for Tio joe to 125.6 mm for Jane with mean root length of 114.4 mm. Maximum root diameter was recorded from variety kulfo (98.8 mm) with no significance difference with Tio joe (84.0 mm); whereas minimum root diameter was recorded on Delvia (64.5mm) with no significant difference over Jane, lordes, Bela and Birtukane Table 3.

Table 3. Mean performance of yield and related traits of orange fleshed sweet potato varieties at Ataye and Shewa Robit, 2019-20.

Genotypes	MRY	TRY	ARD (mm)	ARL (mm)	ARW(g)	ARNPP
Kulfo	37.0 ^a	38.8 ^a	98.8 ^a	100.3	197.0 ^{ab}	7.6 ^{bc}
Delvia	28.4 ^{bc}	30.8 ^{ab}	64.5 ^c	117.0	122.2 ^c	9.6 ^{ab}
Jane	29.3 ^{ab}	31.4 ^{ab}	70.4 ^{bc}	125.6	163.4 ^{bc}	7.4 ^{bc}
Tio joe	20.8 ^c	22.1 ^c	84.0 ^{ab}	95.2	163.4 ^{bc}	5.0 ^d
Cicilia	29.4 ^{ab}	30.6 ^b	81.5 ^b	119.7	234.1 ^a	5.9 ^{cd}
Lordes	33.2 ^{ab}	35.6 ^{ab}	68.5 ^{bc}	121.2	126.5 ^c	9.8 ^a
Bela	30.4 ^{ab}	31.3 ^{ab}	79.4 ^{bc}	114.3	225.7 ^a	5.4 ^{cd}
Birtukane	30.2 ^{ab}	32.5 ^{ab}	80.2 ^{bc}	122.4	116.6 ^c	10.3 ^a
Mean	29.8	31.6	78.4	114.4	168.6	7.6
LSD	7.8	7.9	16.4	25.4	58.8	2.2
CV (%)	32.3	30.8	25.6	27.1	42.6	34.7

Note: TRY: total root yield, MRY: marketable root yield, ARW: average root weight, ARNPP: average root number per plant, ARD: average root diameter, and ARL: average root length. The superscript letters "a,b,c,d" implies for the degree of statically variation among the varieties for each measured attributes and "

'a' entails the highest value/score whereas 'd' denotes the least value/score.

Average root number varied from 5.0 for Tio joe to 10.3 for Birtukane with no statistical variation with Lords (9.8) and Delvia (9.6). This weight difference may be come from genetic capability of the sweet potato varieties as also described by Nedunchezhiyan, et al. [8]. Marketable root weight ranged from 20.8 tha⁻¹ for Tio joe to 37.0 tha⁻¹ for Kulfo. As explained by Nedunchezhiyan, et al. [9] the differences in marketable root yield could be attributed to the genetic variations among the orange fleshed sweet potato varieties in partitioning photosynthesis.

3.2. Farmer Preference of the Varieties

Participation of farmers on technology evaluation would help in getting feedback about the technologies and identify existing constrain. Moreover, farmers' participation in the variety selection process has a paramount role to identify farmers' preferred traits and in promoting in promoting the technologies. In this regard, field day was prepared at full maturity/harvesting stage of the crop to select farmers preferred varieties and achieve the objective of the experiment participating researchers, experts, head of district agricultural development office, extension agents, and farmers participated in the selection of varieties at Shewa robit in 2020.

Two phases of selection ways were used in the field day. The first was selecting a selection attribute to identify the best sweet potato variety. As illustrated in Table 4 farmers have set pest tolerance, yield, root size, root number and above ground biomass as the best attributes to identify the best sweet potato varieties. Then after, they have identified the varieties which they like most based on the allover mean of preset selection attributes Table 5. Hence, Lords, Cicilia and Birtukane were selected as the best farmers preferred varieties.

Table 4. Pair wise ranking matrix for the selection attributes of White and orange fleshed sweet potato varieties at Shewa Robit, 2020.

Attributes	YD	RS	AGBM	PT	NR	Scores	Rank
Yield		YD	YD	PT	YD	3	2 nd
Root size			RS	PT	RS	2	3 rd
AGBM				PT	NR	0	5 th
Pest tolerance					PT	4	1 st
No. of roots						1	4 th

Note: YD: yield, RS: root size, AGBM: above ground biomass, PT: pest tolerance, and NR: number of roots.

Table 5. Farmers preference ranking matrix summary sheet of orange fleshed sweet potato varieties at Shewa Robit, 2020.

Variety	Farmers selection attributes					Mean	Rank
	PT	YD	RS	NR	AGBM		
Lordes	4	3	3	2.5	3.25	3.15	1 st
Cicilia	3	2.42	2.92	2.25	3.17	2.75	2 nd
Birtukane	1.5	3.25	3.17	3.75	1.67	2.67	3 rd
Jane	1.58	1.08	1.5	1.58	1.92	1.53	4 th

3.3. Sensory Evaluation of Sweet Potato Varieties

Though the boiled form promotes the greatest losses in relation to chemical and nutritional composition of sweet potatoes, it is the widely used practice of consumption under Ethiopian condition. According to Kader [10] sensory attributes such as appearance (visual), flavor (taste and smell), texture (feel), nutritive value and safety are very important criteria for assessing the quality of processed sweet potato roots. In this study, there is a notable difference among the tested sweet potato cultivars in terms of sensory attributes which in turn may significantly influence the overall taste and acceptability of the cultivars. With this notion, we have conducted sensory evaluation of boiled sweet potato varieties participating 11 panelists. The score of the sensory attributes of orange fleshed sweet potato varieties were ranged from 4 "neither like nor dislike" to 6 "like very much" Table 6. The highest (6.1) and lowest (4.2) average acceptability is given for Bela and Lordes varieties, respectively. Generally, the panelists have disclosed as there is a significant varietal differences in terms of the overall sensory attributes. The preferences sensory attributes may vary from locations to locations and the sweetness level of sweet potato can influence the area of its utilization. Adu-Kwarteng, et al. [11] reported that for products such as snack foods and desserts, the sweet taste is highly preferred.

Table 6. Sensory attributes of boiled sweet potato varieties, 2020.

Genotypes	Color	Taste	Flavor	Texture	Mouth feel	Overall acceptability	Average	Rank
Kulfo	5.2	4.7	5.1	4.8	5.5	5.1	5.1	3
Delvia	4.8	5.2	5.0	5.1	4.9	5.0	5.0	4
Jane	4.4	4.2	4.8	4.6	4.0	4.4	4.4	7
Tio joe	5.4	4.7	4.5	3.9	4.1	4.5	4.5	6
Cicilia	5.2	4.6	4.6	4.9	4.5	4.9	4.8	5
Lordes	4.7	3.9	3.9	4.5	3.8	4.5	4.2	8
Bela	5.7	5.8	5.5	6.2	6.0	6.1	5.9	1
Birtukane	5.8	5.5	5.1	5.2	5.8	5.4	5.5	2
Mean	5.1	4.8	4.8	4.9	4.8	5.0		

4. CONCLUSION AND RECOMMENDATION

Adaptation trial of eight orange fleshed sweet potato varieties were conducted in 2012-13 in the lowlands of north Shewa. Based the combined performance across locations and years, varieties Kulfo, Lords and Birtukane gave the highest root yield. Farmers were also selecting varieties Lords, Cicilia and Birtukane. Panelists selected Bela Birtukane and Kulfo as the best varieties. Hence, based on the current result we can suggest varieties Kulfo, Lords and Birtukane varieties which were selected both by farmers and researchers for production and popularization the lowlands of north shewa and other similar agro-ecologies.

Funding: This study received no specific financial support.

Institutional Review Board Statement: Not applicable.

Transparency: The authors state that the manuscript is honest, truthful, and transparent, that no key aspects of the investigation have been omitted, and that any differences from the study as planned have been clarified. This study followed all writing ethics.

Competing Interests: The authors declare that they have no competing interests.

Authors' Contributions: All authors contributed equally to the conception and design of the study. All authors have read and agreed to the published version of the manuscript.

REFERENCES

- [1] S. Sora, "Evaluation of sweet potato (*Ipomoea Batatas* (L) Lam) varieties at T epi, Southwestern Ethiopia," *Journal of Horticultural*, vol. 8, p. 538, 2021.
- [2] T. F. Laban, K. Peace, M. Robert, K. Maggiore, M. Hellen, and J. Muhumuza, "Participatory agronomic performance and sensory evaluation of selected orange-fleshed sweet potato varieties in South Western Uganda," *Global Journal of Science Frontier Research*, vol. 15, pp. 25-30, 2015.

- [3] B. Amare, F. Abay, and Y. Tsehay, "Evaluation of sweet potato (*Ipomea batata* L.) varieties for total storage root yield in south and south east zones of Tigray, Ethiopia," *American Journal of Trade and Policy*, vol. 1, pp. 74-78, 2014. <https://doi.org/10.18034/ajtp.v1i2.366>
- [4] CSA (Central Statistical Agency), "Agricultural sample survey for 2013/14: Report on area and production of major crops for private peasant holdings, Meher season," Statistical Bulletin No 532, Addis Ababa, 2014.
- [5] Y.-M. Goo, E.-H. Han, J. C. Jeong, S.-S. Kwak, J. Yu, Y.-H. Kim, M.-J. Ahn, and S.-W. Lee, "Overexpression of the sweet potato IbOr gene results in the increased accumulation of carotenoid and confers tolerance to environmental stresses in transgenic potato," *Biology Reports*, vol. 338, pp. 12-20, 2015. <https://doi.org/10.1016/j.crvi.2014.10.006>
- [6] K. Tomlins, G. Ndunguru, K. Stambul, N. Joshua, T. Ngendello, E. Rwiza, R. Amour, B. Ramadhani, A. Kapande, and A. Westby, "Sensory evaluation and consumer acceptability of pale-fleshed and orange-fleshed sweetpotato by school children and mothers with preschool children," *Journal of the Science of Food and Agriculture*, vol. 87, pp. 2436-2446, 2007. <https://doi.org/10.1002/jsfa.2931>
- [7] T. Tesfaye, T. Engida, T. Aseffa, A. Teshome, K. Asfawu, G. Yohannis, and M. Daniel, "Performance of medium and late maturing sweet potato germplasms in different agroecologies of Ethiopia," in *Proceedings of the 14th Annual Conference of the Crop Science Society of Ethiopia. 28-29 April 2011. Addis Ababa, Ethiopia*, 2011.
- [8] M. Nedunchezhiyan, G. Byju, and S. Jata, "Sweet potato agronomy," *Fruit, Vegetable and Cereal Science and Biotechnology*, vol. 6, pp. 1-10, 2012.
- [9] M. Nedunchezhiyan, G. Byju, and S. Naskar, "Sweet potato (Morning glory potatoes L.) as an intercrop in a coconut plantation: Growth, yield and quality," *Journal of Root Crops*, vol. 33, pp. 26-29, 2007.
- [10] A. Kader, *Quality factors: Definition and evaluation for fresh Horticultural crops*. Oakland, California. (USA): University of California, Division of Agriculture and Natural Resources, 1985.
- [11] E. Adu-Kwarteng, J. Otoo, and I. Oduro, "Screening for sweetpotato for poundability into fufu," in *Proc. 8th ISTRC-AB Symp. Ibadan, Nigeria*, 2001.

Views and opinions expressed in this article are the views and opinions of the author(s), Review of Plant Studies shall not be responsible or answerable for any loss, damage or liability etc. caused in relation to/ arising out of the use of the content.